

H3542 6 PC 4WD Spindle Locknut Socket Set



- Used to remove/install 2 and 4 wheel drive light truck spindle/bearing nuts
- Heavy-duty construction, made from Chrome Vanadium heat-treated steel
- Includes 4WD spindle removing socket tool
- Includes Toyota locknut socket tool
- Includes 3 step 4WD spindle remover tool
- Sockets are 1/2" square drive and are designed for use with ratchets, flex and breaker bars, and torque wrenches
- **NOTE:** Do not use with air or electric impact tools
- Comes in a convenient blow mould storage case

Kit includes:

- 6 most popular 4WD spindle locknuts as follows: H1486, H3107, H3405, H3406, H3601, H3604 (see open stock for specifications and applications)

4WD SPINDLE LOCKNUT SOCKETS (OPEN STOCK)



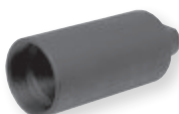
1 H3107 2-3/8"



2 H1486 2-5/8"



3 H3406 2-1/4"



4 H3604



5 H3405 2-3/4"



6 H3601

H3107 4 Pin 2-3/8" Outer Style Locknut Socket

- 1986 to current Ford™ Bronco and Ranger with Dana44 axles
- 1960 to current 1/2 ton Chevrolet and GMC
- 1966 to current Bronco, Blazer and Scout
- 1959 to current Ford™ 100-250 series
- 1969 to current Dodge 1/2 ton vehicles

H1486 6 Pin 2-5/8" Outer Style Locknut Socket

- 1978 to current Ford™ 4/4 ton vehicles
- 1973 to 1981 GM 3/4 ton vehicles

H3406 4 Pin 2-1/4" Inner Style Locknut Socket

- 1960 to current 1/2 ton Chevrolet & GMC
- 1966 to current Bronco, Blazer & Scout
- 1959 to current Ford™ F150-250 series
- 1969 to current Dodge 1/2 ton vehicles

H3604 3 Step 4WD Spindle Remover Tool

- Pulls out 4WD spindles for lubricating the inner needle bearing and front wheel alignment
- Fits common 1/2 & 3/4 ton 4WD pickup spindles
- 3 step design fits 1-1/2", 1-5/8" and 2" spindles
- Use with 1/2" - 20 or 5/8-18 thread slide hammer

H3405 4 Pin 2-3/4" Outer x 1-9/16" Style Locknut Socket

- 1985 to late Ford™ F250-350 truck rear axle with Hi-Shear rotating nut and Ford™ Dana 80 truck rear axles

H3601 4 Pin (Toyota) Style Locknut Socket

- Toyota 1995 and newer Tacoma, 1996 and newer T100 and 4-Runner