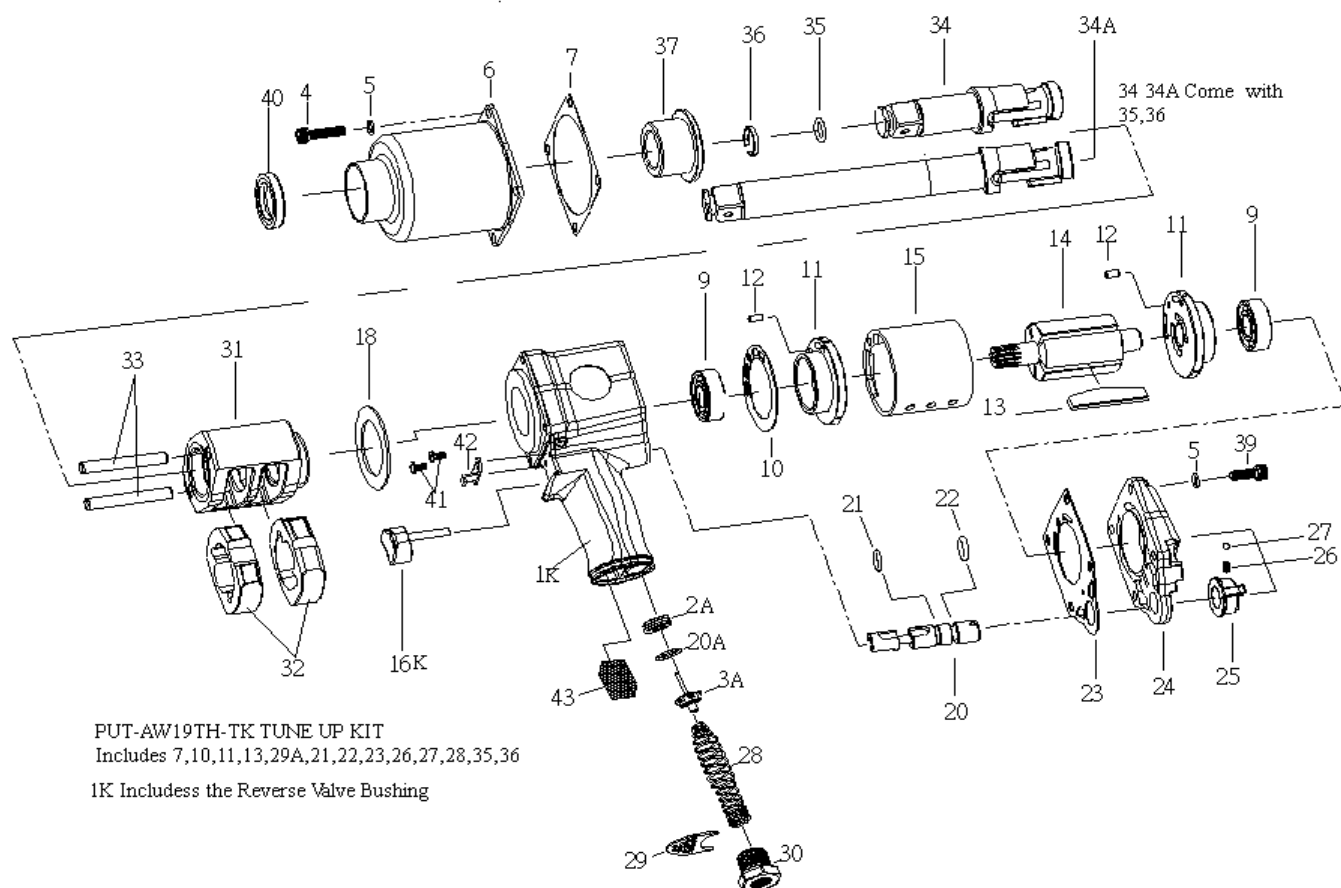


# AW19TH 3/4" HEAVY DUTY IMPACT PRODUCT # 400309



REF	PART NUMBER	DESCRIPTION	REQ	REF	PART NUMBER	DESCRIPTION	REQ
1K	PUT-AW19TH-01K	AW19TH MOTOR HOUSING ASSY	1	23	PUT-AW19TH-23	AW19TH BACK CAP GASKET:T/UP KIT	1
02A	PUT-AW19TH-02A	AW19TH THROTTLE VALVE SEAT	1	24	PUT-AW19TH-24	AW19TH BACK CAP	1
03A	PUT-AW19TH-03A	AW19TH THROTTLE VALVE	1	25	PUT-AW19TH-25	AW19TH AIR REGULATOR	1
4	PUT-AW19TH-04	AW19TH HAMMER CASE CAP SCREW	4	26	PUT-AW19TH-26	AW19TH SPRING:T/UP KIT	1
5	PUT-AW19TH-05	AW19TH LOCK WASHER	8	27	PUT-AW19TH-27	AW19TH STEEL BALL:T/UP KIT	1
6	PUT-AW19TH-06	AW19TH HAMMER CASE	1	28	PUT-AW19TH-28	AW19TH THROTTLE VALVE SPG:T/UP KIT	1
7	PUT-AW19TH-07	AW19TH HAMMER CASE GSKT:T/UP KIT	1	29	PUT-AW19TH-29	AW19TH EXHAUST DEFLECTOR	1
9	PUT-AW19TH-09	AW19TH B/BALL USE:	1	30	PUT-AW19TH-30	AW19TH AIR STRAINER	1
10	PUT-AW19TH-10	AW19TH END PLATE GASKET:T/UP KIT	1	31	PUT-AW19TH-31	AW19TH HAMMER FRAME	1
11	PUT-AW19TH-11	AW19TH END PLATE	2	32	PUT-AW19TH-32	AW19TH HAMMER	2
12	PUT-AW19TH-12	AW19TH PIN	2	33	PUT-AW19TH-33	AW19TH HAMMER PIN	2
13	PUT-AW19TH-13	AW19TH ROTOR BLADE:T/UP KIT	5	34	PUT-AW19TH-34	AW19TH STANDARD ANVIL	1
14	PUT-AW19TH-14	AW19TH ROTOR	1	34A	PUT-AW19TH-34A	AW19TH 6" EXTENDED ANVIL	1
15	PUT-AW19TH-15	AW19TH CYLINDER	1	35	PUT-AW19TH-35	AW19TH SKT RETAINER O-RING:T/UP KIT	1
16K	PUT-AW19TH-16K	AW19TH TRIGGER WITH PIN	1	36	PUT-AW19TH-36	AW19TH SKT RETAINER:T/UP KIT	1
18	PUT-AW19TH-18	AW19TH HAMMER FRAME RR/WSHR	1	37	PUT-AW19TH-37	AW19TH HAMMER CASE BUSHING	2
20	PUT-AW19TH-20	AW19TH REVERSE VALVE	1	39	PUT-AW19TH-39	AW19TH SCREW	4
20A	PUT-AW19TH-20A	AW19TH O-RING:T/UP KIT	1	40	PUT-AW19TH-40	AW19TH OIL SEAL	1
21	PUT-AW19TH-21	AW19TH O-RING:T/UP KIT	1	41	PUT-AW19TH-41	AW19TH SCREW	2
22	PUT-AW19TH-22	AW19TH O-RING:T/UP KIT	1	42	PUT-AW19TH-42	AW19TH END CAP	1
				43	PUT-AW19TH-43	AW19TH FILTER	1