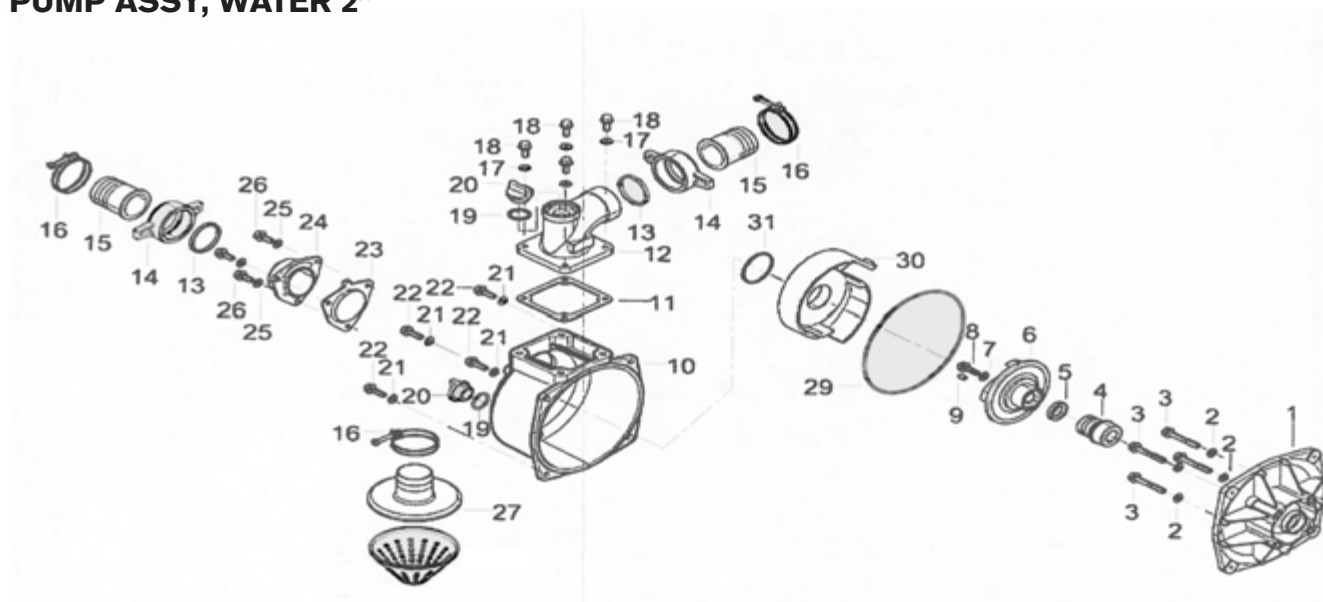


REF #	DESCRIPTION	PART #
1	LONCIN 212cc ENGINE	85.590.070*
2	COMPLETE 2" PUMP KIT WITH FRAME (NO ENGINE)	85.150.201*
	COMPLETE PUMP REBUILD KIT	PBE-50002206

PUMP ASSY, WATER 2"



REF #	DESCRIPTION	QTY	PART #
1	WATER PUMP CASING (ENGINE MOUNT SIDE)	1	85.571.136*
2	WASHER	4	50.002.200*
3	BOLT	4	50.002.200*
4	MECHANICAL SEAL (STATIONARY SIDE)	1	PBE-50002206 PUMP REBUILD KIT
5	MECHANICAL SEAL, PORCELAIN (ROTATING SIDE)	1	PBE-50002206 PUMP REBUILD KIT
6	IMPELLER	1	PBE-50002206 PUMP REBUILD KIT
7	WASHER	1	50.002.200*
8	BOLT	1	50.002.200*
9	SHAFT KEY	1	50.002.200*
10	PUMP BODY	1	85.571.134*
11	GASKET, OUTLET	1	PBE-50002206 PUMP REBUILD KIT
12	OUTLET, WATER	1	PBE-50002206 PUMP REBUILD KIT
16	HOSE CLAMP	3	
17	WASHER	4	
18	BOLT	4	
19	O-RING, FOR SCREW PLUG	2	PBE-50002206 PUMP REBUILD KIT
20	SCREW PLUG, FOR PRIMING PUMP	2	PBE-50002206 PUMP REBUILD KIT
21	WASHER	4	
22	BOLT	4	50.002.200*
23	GASKET AND FLAPPER VALVE, WATER INLET	1	PBE-50002206 PUMP REBUILD KIT
24	INLET, WATER	1	PBE-50002206 PUMP REBUILD KIT
25	WASHER	4	50.002.200*
26	BOLT	4	
27	STRAINER FOR 2" WP	1	
29	O-RING, FOR SEALING THE PUMP HOUSING	1	PBE-50002206 PUMP REBUILD KIT
30	VOLUTE	1	85.571.135*
31	O-RING, FOR BETWEEN VOLUTE AND PUMP HOUSING	1	PBE-50002206 PUMP REBUILD KIT