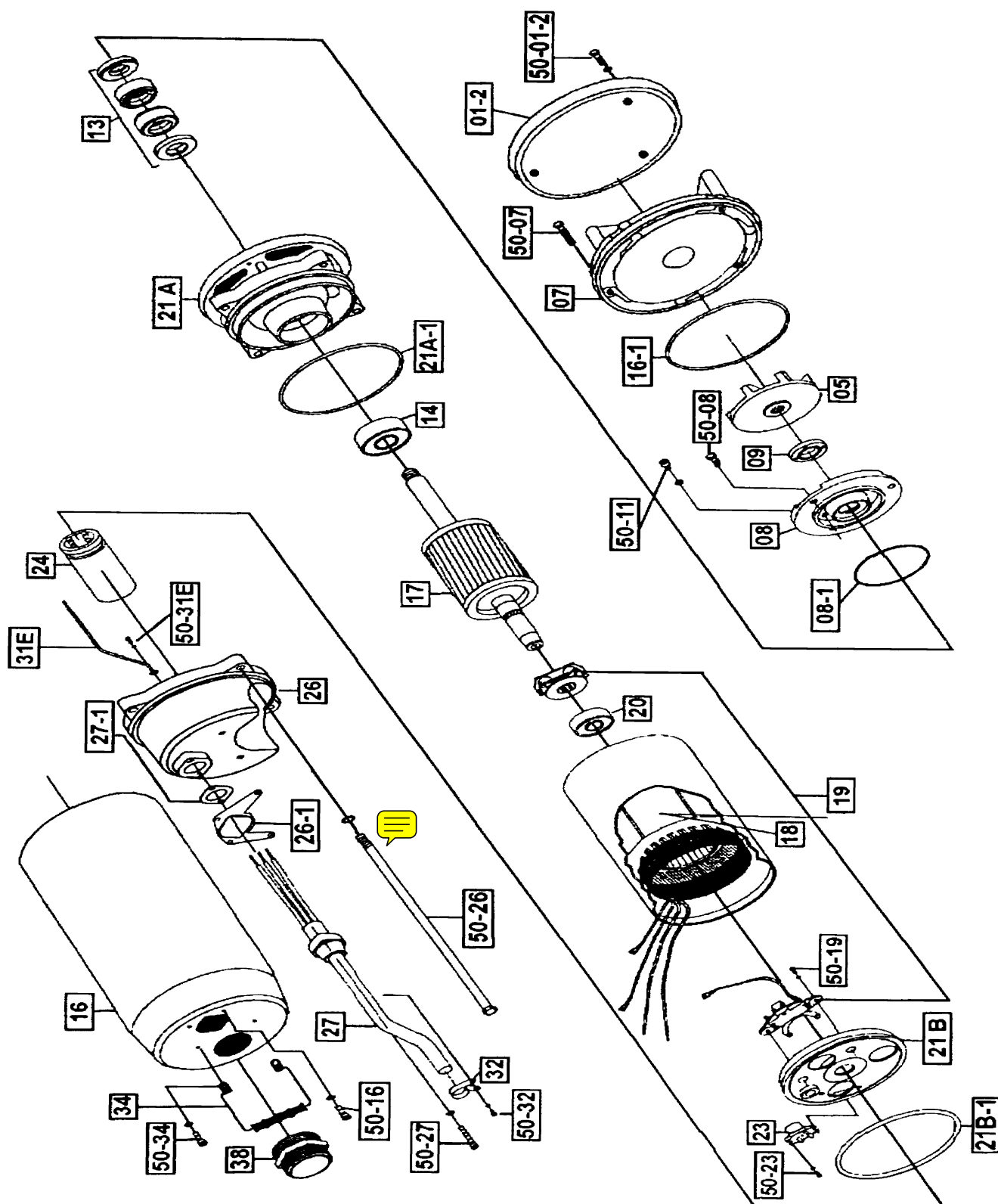


# **JET 2" SUBMERSIBLE PUMP MODEL R750-115** **PRODUCT # 290774**



# **JET 2" SUBMERSIBLE PUMP MODEL R750-115**

## **PRODUCT # 290774**

REF	PART	DESCRIPTION
01-2	PBJ-128	R750 BOTTOM PLATE
05	PBJ-526	R750 IMPELLER CAST IRON NEW STYLE
07	PBJ-704	R750 PUMP HOUSING/SUCTION COVER
07-1		R750 O-RING KIT ONLY
08	PBJ-810	R750 OIL CHAMBER COVER
08-1		R750 O-RING KIT ONLY
09	PBJ-902	R750 LIPSEAL 12MM (0.5HP)
13	PBJ-1325	R750 MECHANICAL SEAL SET (1PR)
14	PBJ-1401	R750 LOWR&UPR B/BRG:USE 6304-2RS
16	PBJ-1613	R750 PUMP CASING OUTER S.S.
16-1		R750 O-RING KIT ONLY
17	PBJ-1705	R750 ROTOR W/SHAFT 115V 1PH
18	PBJ-1805	R750 STATOR WITH CASING 115V
18	PBJ-1826	R750 STATOR WITH CASING 230V
19	PBJ-1904	R750 GOVERNOR SWITCH
20	PBJ-2002	R750 LOWR&UPR B/BRG:USE 6203-2RS
21A	PBJ-705	R750 OIL CHAMBER
21A-1		R750 O-RING KIT ONLY
21A-2		R750 O-RING KIT ONLY
21B	PBJ-2103	R750 MOTOR COVER UPPER
23	PBJ-2306	R750 OVERLOAD 115V 1PH
23	PBJ-2314	R750 OVERLAOD 230V 1PH
24	PBJ-2450	R750 CAPACITOR 115V (RUN)
24	PBJ-2491	R750 CAPACITOR 230V
26	PBJ-2610	R750 PUMP TOP COVER
26-1		R750 GASKET KIT ONLY
27	PBJ-2712	R750 POWER CABLE W/GLAND 33FT
27-1		R750 O-RING KIT ONLY
27-2		R750 O-RING KIT ONLY
31-E	PBJ-2776	R400 GROUND WIRE W/RING TERM
32	PBJ-3200	R400 POWER CORD LINE CLIP
34	PBJ-3411	R400 HANDLE
35	PBJ-4103	R750 ROD BOLTS 316SS
38-E	PBJ-3802	R400 DISCHARGE NIPPLE NPT S/2"
50-02	PBJ-5010	R400 SCREW FOR BOTTOM PLATE
50-07	PBJ-5038	R750 SCREW FOR SUCTION COVER
50-08	PBJ-5009	SV400 SCREW FOR OIL CHAMBER
50-11	PBJ-5008	R400 SCREW FOR OIL FILLER
50-16	PBJ-5010	R400 SCREW FOR OUTER CASING
50-19	PBJ-5002	SV400 SCREW FOR GOV. PLATE
50-23	PBJ-5028	R750 SCREW FOR OVERLOAD
50-27	PBJ-5004	R400 SCREW FOR POWER CORD
50-31E	PBJ-5000	R400 SCREW FOR GROUND WIRE
50-32	PBJ-5010	R400 SCREW FOR LINE CLIP
50-34	PBJ-5010	R400 SCREW FOR HANDLE
	PBJ-4035	R750 O/R AND GSKT KIT PERBUNA
	PBJ-9999	MECHANICAL SEAL CHAMBER OIL (1L)