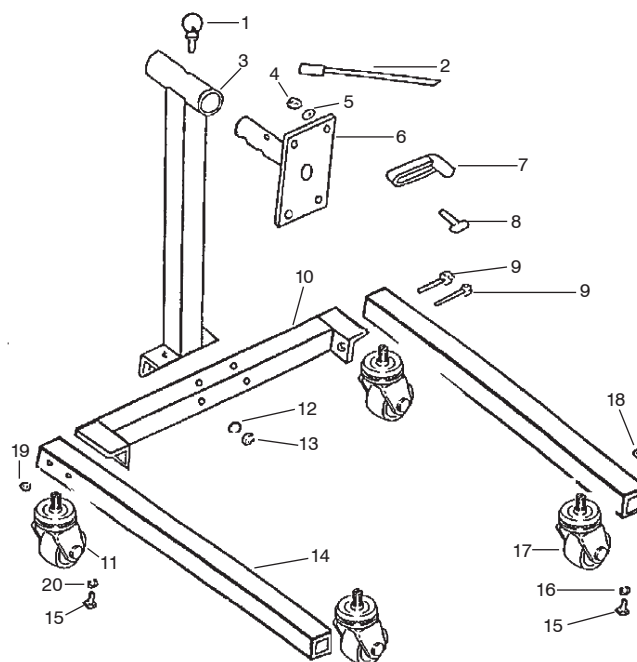


1,250 lb U-Shape Engine Stand

1. Do not load beyond rated capacity.
2. Use only on hard level surface capable of supporting load.
3. Do not roll loaded stand over cracks, cords, bumps, steps, or uneven surfaces.
4. Ensure all components are assembled and fasteners are fully tightened before applying load.
5. Ensure load is centered and secured to mounting plate. Lock rotating mechanism prior to applying load.
6. When releasing rotating mechanism, do so slowly and carefully. Off centered loads may cause inadvertent rotation, when mechanism is released.
7. Do not substitute mounting hardware.
8. Read and understand instructions before use, failure to comply with all recommendations may result in sudden loss of load, resulting in damage and/or personal injury.



REF.	PART NUMBER	DESCRIPTION	REQ.
1	PCM-024841-01	E/S Pin	1
2	PCM-024841-02	E/S Handle	1
3	PCM-024841-03	E/S Post: N/A	1
4	PCM-024841-04	E/S Nut M14: Use PMC-024841-HK	4
5	PCM-024841-05	E/S Washer M14 Use: PMC-024841-HK	8
6	PCM-024841-06	E/S Turning Plate N/A	1
7	PCM-024841-07	E/S Shifting Stand	4
8	PCM-024841-08	E/S Bolt M12X85 Use: PMC-024841-HK	4
9	PCM-024841-09	E/S Bolt M12X85 Use: PMC-024841-HK	8
10	PCM-024841-10	E/S Rear Beam N/A	1
11	PCM-024841-11	E/S Rear Swivel Wheel	2
12	PCM-024841-12	E/S Washer M12 Use: PMC-024841-HK	8
13	PCM-024841-13	E/S Nut M12 Use: PMC-024841-HK	6
14	PCM-024841-14	E/S Leg N/A	2
15	PCM-024841-15	E/S Bolt M8X20 Use: PMC-024841-HK	8
16	PCM-024841-16	E/S Lock Washer M8 Use: PMC-024841-HK	8
17	PCM-024841-17	E/S Front Swivel Wheel	2
18	PCM-024841-18	E/S Nut M8 Use: PMC-024841-HK	8
19	PCM-024841-19	E/S Nut M12 Use: PMC-024841-HK	2
20	PCM-024841-20	E/S Lock Washer M12 Use: PMC-024841-HK	2
**	PCM-024841-HK	E/S Hardware Kit	1

M12-ITC024302-3-12

